

# TOOLHITS

Measuring tools, workshop tools  
and misc. equipment for the  
industrial market



0-200MM  
**188 EUR**

10305720

0-300MM  
**265 EUR**

10305730

**NEW IN!**

## DIGITAL MARKING GAUGE

Digital marking gauge with measuring range 200/300 mm, 100 mm base and reading 0.01mm or 0,0005". *Delivered in box for storage.*



GREAT PRICE!

**11 EUR**

10240100

## CARBON FIBER CALIPER

Digital caliper in carbon fiber. Auto on/off, alternation between mm and inches, flat depth gauge. *Delivered in box incl. 1xLR44 battery.*

Measuring range: 0-100 mm

Resolution: 0.01 mm

Jaw length: 30 mm



**185 EUR**

35171030

## FLANGE WIZARD DIGITAL CENTER HEAD FOR PIPES

Magnetic centering head 4 x 90° (for 3" pipes and larger) to establish and mark a center line at any angle around the circumference (inside and out) on a pipe/tank.

Accuracy: ±0.2°. *Delivered in case incl. 2 x AAA batteries.*



**44 EUR**

35170210

## CURV-O-MARK CENTER HEAD STANDARD J1879

For setting of center lines, angles and marks for butt-ins, location points inside pipes/tanks, laying out key ways and measuring declivity. For 1/2" pipes and up. With a 4" Y-type head and adjustable dial bubble protractor.



0-150MM  
**21 EUR**

10132150

0-300MM  
**62 EUR**

10134300

## CALIPER WITH SCREW LOCK

Solid caliper with screw lock and fine-adjustment, suitable for most measuring tasks. *Delivered in plastic box.*



FROM  
**331 EUR**

**NEW IN!**

## DIGITAL INTERNAL MICROMETER

Micrometer for internal measurement with replaceable extensions for large measuring ranges up to 2000 mm. Extensions are made in pipe design with carbide-coated measuring surfaces.



FROM  
**54 EUR**

10218450

## IP54 DIGITAL CALIPER

Quality digital caliper in stainless steel with ABS function. DIN862. Mono-block, auto on/off, change between mm and inches, flat depth gauge. *Delivered in plastic box for storage incl. 1xLR44 battery.*

Item no.	Measuring range	Resolution	Price EUR
10272705	150-175mm	0.001 mm	331.00
10272715	150-1000mm	0.001 mm	694.00
10272725	150-1500mm	0.001 mm	955.00
10272735	150-2000mm	0.001 mm	1.092.00

Item no.	Measuring range	Jaw length	Price EUR
10218450	0-150mm	40mm	54.00
10218465	0-200mm	50mm	75.00
10218480	0-300mm	60mm	103.00



# SALE SALE SALE WRKPRO

Professional work lighting by Diesella

**ONLY WHILE STOCK LASTS**

# SALE SALE SALE SALE SALE

## F5X F6X

### WRKPRO LED WORK LAMP WITH RECHARGABLE BATTERY

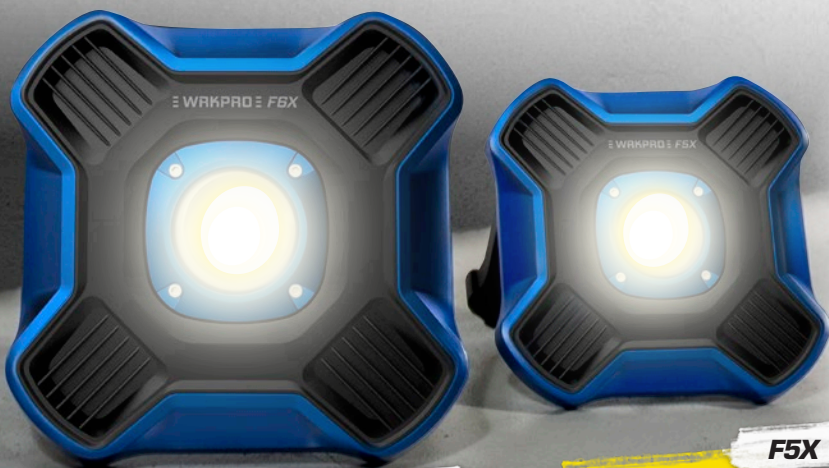
Compact and portable work lamps with 10W/30W COB LED and adjustable brightness. Both with USB output port, built-in rechargeable 3.7V 4400 mAh Li-Ion battery and powerful tiltable stand with hole for clamping. IP54 protection class.

#### F6X

- Main light: 30W COB LED
- Lumen: 500 - 3500 Lm
- Size: 211 × 211 × 64 mm
- Runtime: 2 - 12 hours

#### F5X

- Main light: 10W COB LED
- Lumen: 400 - 1100 Lm
- Size: 186 × 165 × 46 mm
- Runtime: 3 - 5 hours



**65 EUR**

50615220

F6X

**26 EUR**

50615210

F5X

SLIM X6

### WRKPRO WORK LAMP SLIM X6

SLIM work lamp with COB LED, top light, magnet and hook for hanging. The light can be adjusted 360° and the base can be angled 42°, giving a flexible adjustment of the light angle of the lamp. IP54 protection class.

- Main light: 7W COB LED
- Top light: 3W SMD LED
- Lumen: 60-700 Lm (*dimnable*)
- Battery: 3.7V 2600 mAh rechargeable Li-Ion
- Mounting: Magnet and hook at the bottom
- Runtime: 1.5 - 16 hours



**29 EUR**

50616130

## SLIM X7

### WRKPRO WORK LAMP SLIM X7

Compact and very flexible work lamp with COB LED and 360° flexible neck. Top light, magnetic base and rechargeable Li-Ion battery. IP54 protection class.

- Main light: COB LED
- Top light: 1W SMD LED
- Lumen: 300 Lm (*dimnable*)
- Battery: 3.7V 2200 mAh rechargeable Li-Ion
- Mounting: Magnetic bottom
- Runtime: 2.5 - 24 hours



**27 EUR**

50616140



## WRKPRO WORK LAMP S1

Smart, rotatable and compact work lamp with a built-in 5W bluetooth speaker as well as 4 different LED light functions (*hot, cold, red, flashing red*).

- Main light: SMD LED
- Lumen: 20-300 Lm
- Mounting: Magnet and hook
- Battery: 3.7V 4400 mAh rechargeable Li-ion incl. charger
- Runtime: 8-15 hours



**36 EUR**  
50615310



## WRKPRO WORK LAMP S2

Compact pocket-sized work light with 2 light levels and a built-in 5W bluetooth speaker. IP54 protection class.

- Main light: COB LED
- Top light: SMD LED
- Lumen: 100-500 Lm
- Mounting: Magnet and rubber eye for hanging
- Battery: 3.7V 2000 mAh rechargeable Li-ion
- Runtime: 2-4 hours



**28 EUR**  
50615320



## WRKPRO WORK LAMP S3

Portable work light, tiltable stand with hole for attachment. Rechargeable, removable Li-ion battery pack which can also be used as a flashlight, extra battery pack can be purchased to extend the functioning time. IP44.

- Main light: 20W COB LED
- Speaker: 2 x 5W Bluetooth
- Lumen: 50-2000 Lm
- Battery: Rechargeable 7.4V 4000 mAh Li-ion
- Runtime: 1h-24 hours



**64 EUR**  
50615330



## H5 WRKPRO WORK LAMP H5

Powerful work lamp with COB LED, adjustable brightness and top light. Extendable and tiltable base with powerful magnet that can be rotated 360°. Built-in hook function that can be rotated 360° horizontally. IP65 protection class.

- Main light: COB LED
- Top light: SMD LED
- Lumen: 160-500 Lm (*dimnable*)
- Mounting: Magnet and hook
- Battery: 3.7V 2600 mAh rechargeable Li-ion
- Runtime: 1.5-3.5 hours



**28 EUR**  
50617260

## WRKPRO WORK LAMP X8

Compact lamp with powerful COB LED and adjustable brightness. Foldable base with powerful magnet that can be rotated 180°. Built-in hook function that can be rotated 360° horizontally. Rechargeable Li-ion battery. IP65 protection class.

- Main light: COB LED
- Lumen: 500-280 Lm (*dimnable*)
- Mounting: Magnet and hook
- Battery: 3.7V 1500 mAh rechargeable Li-ion
- Runtime: 2-3.5 hours



**20 EUR**  
50616150

## M2 WRKPRO WORK LAMP M2

Compact work lamp with a flexible gooseneck. The Ø25mm lamp head has a focus and zoom function. OSRAM LED with 2 brightness levels. IP54 protection class.

- Main light: OSRAM LED
- Lumen: 125-250 Lm (*dimnable*)
- Mounting: Magnetic bottom
- Battery: 3.7V 2200 mAh rechargeable Li-ion
- Runtime: 4-12 hours



**23 EUR**  
50618415



# WLDPRO

Professional welding gear by Diesella

## WLDPRO MAGNET WITH FIXED 90° ANGLE

Holding force: 400N/40 kg. With hand grip. Size: 140 × 140 mm.

**44 EUR**

30171190

## WLDPRO MAGNET WITH FIXED 90° ANGLE

Holding force: 735N/75 kg  
Size: 225 × 225 mm.

**56 EUR**

30171195

## WLDPRO MAGNETIC GROUND CLAMP

Lets welders quickly set up. Strong grip on flat or round surfaces.

Holding force:  
300A - 40kg/390N  
600A - 70kg/685N

**74 EUR**

30172060

**52 EUR**

30172030

## WLDPRO HOLDER FOR SOAPSTONE CHALK

Fits soapstone chalk flat type.

**3 EUR**

20149560

## WLDPRO HOLDER FOR SOAPSTONE CHALK

Fits soapstone chalk circular type.

**3 EUR**

20149575

## WLDPRO HI-LOW GRIP GAUGE

Stainless steel welding gauge in 0.018 mm satin finished. (GS 2-612)

**30 EUR**

35162354

## WLDPRO WELD FILLET GAUGE

Stainless steel gauge with 7 blades, 28 sizes. Check convex/concave welding seams. (Model K).

**28 EUR**

35162360

## WLDPRO WELD FILLET GAUGE

Adjustable stainless steel gauge with "inch" scale for measuring weld leg length 1/8" to 1", and A-dimensions 0-1". (Model K2)

**38 EUR**

35162363

## WLDPRO WELDING SEAM CONTROL

For control of the A-seam dimension from 4 - 12 mm 90° angles. (Model A).

**15 EUR**

35163270

## WLDPRO SOAPSTONE CHALK

Used for marking during welding work. The chalk can easily be seen through the welding screen. High heat resistance up to 2000°C.

Available in 3 sizes:

**Square shape**

**Size:** 10 × 10 × 100 mm

**Pieces:** 50 pcs./pack

ART. 20149520

Fits holder art. 20149100

**Flat shape**

**Size:** 127 × 12.7 × 4,8 mm

**Pieces:** 144 pcs./pack

ART. 20149535

Fits holder art. 20149560

**Round shape**

**Size:** 125 × Ø6.4 mm

**Pieces:** 144 pcs./pack

ART. 20149550

Fits holder art. 20149575

**13 EUR**

20149520

**18 EUR**

20149535

**28 EUR**

20149550



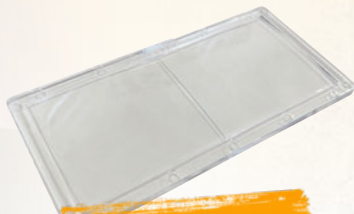


FREE CHOICE  
**80 EUR**

## WLDPRO WELDING HELMET

Comfortable welding helmet with high visibility (102 × 67 mm). Made of impact-resistant polyamide nylon. Outside, stepless adjustment of shading level DIN 5-13 (5-9 + 9-13) and grinding function, inside adjustment of the sensitivity and delay. 4 sensors. Self rechargeable solar panel that extends battery life (2 × battery backup). Weight: 495 g Power supply: Solar cell panel/battery.

● ART. 35122060 ● ART. 35122075



FREE CHOICE  
**6 EUR**

## WLDPRO WELDING GLASS

Magnifying glass for welding helmet art. 35122XXX. Size: 52 × 108 mm.

Item no.	Magnification
35122100	+1.0
35122105	+1.5
35122110	+2.0
35122115	+2.5



D4S

**9 EUR**

35155420

## WLDPRO D4S WELDING PLIER 175 MM/7"

Welding plier with curved jaws. Holds round, profile and flat materials securely. Jaws with longitudinal teeth. Black-oxidized, high-alloy steel. Length: 175 mm/7".



D5

**19 EUR**

35155005

## WLDPRO D5 WELDING PLIER 230 MM/9"

Welding plier with narrow movable jaws. Universal gripper for clamping on flat materials or smaller, round profiles along the forceps (V-groove in the jaws). Length: 230 mm/9".



D7

**18 EUR**

35155007

## WLDPRO D7 WELDING PLIER 280 MM/11"

This grip plier is for clamping, tensioning and holding of various workpieces and profiles. With movable jaws and setting screw. Black-oxidized, high-alloy steel. Length: 280 mm/11".



D14

**20 EUR**

35155014

## WLDPRO D14 WELDING PLIER 280 MM/11"

Compact C-clamp plier with wide movable jaws. For clamping and holding different types of workpieces and lower profiles. Black-oxidized, high-alloy steel. Length: 280 mm/11".



NS  
D13

**18 EUR**

35155313

## WLDPRO D13NS WELDING PLIER 280 MM/11"

Welding plier with T-slot clamp and round pressure pad. No surface treatment. Mounting hole:  $\varnothing$ 10 mm. Length: 280 mm/11".



D13

**19 EUR**

35155013

## WLDPRO D13 WELDING PLIER 280 MM/11"

Plier with T-slot clamp and round pressure pad. Black-oxidized, high-alloy steel. Mounting hole:  $\varnothing$ 10 mm. Length: 280 mm/11".





**736 EUR**

10272665

**FROM 95 EUR**



**NEW IN!**

### INSIDE MICROMETER WITH EXTENSION RODS

Inside micrometer for internal measurement with replaceable extensions for large measuring ranges from 50-1500 mm x 0.01 mm. Extensions rods are pipe design with carbide-coated measuring surfaces. *Delivered in wooden box.*

### PRECISION BORE GAUGE WITH DIAL

A dial bore gauge is a special tool which is used to accurately measure the inside diameter of a hole, cylinder or pipe. In conjunction with a micrometer, a bore gauge will give you the exact reading of a bore size.

The measuring sled consists of three guides and an actuating plunger. Dial bore gauges give you quick and accurate readings on the size, less than perfect roundness or wear.

Item no.	Measuring range	Resolution	Price EUR
10273410	6-10mm	0.01 mm	122 <sup>00</sup>
10273420	10-18 mm	0.01 mm	95 <sup>00</sup>
10273430	18-35 mm	0.01 mm	95 <sup>00</sup>
10273440	35-50 mm	0.01 mm	95 <sup>00</sup>
10273450	50-160 mm	0.01 mm	130 <sup>00</sup>
10273460	160-250 mm	0.01 mm	153 <sup>00</sup>
10273470	250-450 mm	0.01 mm	193 <sup>00</sup>
10273480	400-800 mm	0.01 mm	169 <sup>00</sup>

### SETTINGMASTER

For fast and accurate control-measurement of bore gauge. Steel gage block are not included, but can be ordered on art. 10395250.

1. For maximum accuracy, remove any excess preservative from the instrument and the flat jaws before use
2. For correct measurement, the instrument is held vertically and without tilting

**235 EUR**

10399145



ART. 10336550

ART. 10335430

ART. 10331510

**FROM 23 EUR**

### DIAL INDICATOR W/ TOLERANCE POINTERS

Dial indicators with metal housing, flat coverplate and hardened and sanded Ø8 mm h6 clamping shaft. Outer ring of dial face can be rotated to zero the dial. Reading: 0.01 mm. Scale: 0-100. *Delivered in a plastic box.*

Item no.	Measuring range	Diameter	Price EUR
10331510	0-10 mm	Ø56 mm	23 <sup>00</sup>
10335430	0-30 mm	Ø60 mm	47 <sup>00</sup>
10336550	0-50 mm	Ø80 mm	92 <sup>00</sup>



**50 EUR**

92271840

### MAGNETIC STAND INCL. DIAL GAUGE 0-10 MM

**Magnetic stand:** With fine-adjustment, prismatic base, Ø8 mm hole and on/off function. Holding force: 80 kg.

**Dial indicator:** Flat back  
Measuring range: 0-10 mm  
Resolution: 0.01 mm  
Scale: 0-100 mm  
Diameter: 58 mm  
Shank: Ø8 mm H6







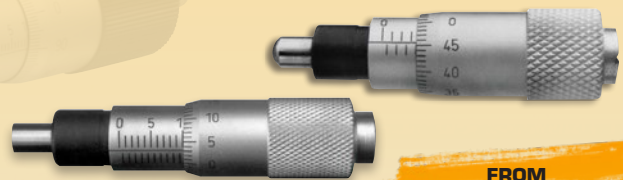
FROM  
**80<sup>00</sup> EUR**

**NEW IN!**

### OUTSIDE MICROMETER WITH BIG THIMBLE

Outside micrometer with big thimble in chrome finish with 1/100 graduation. Precision lapped and with carbide-tipped measuring faces. Hardened and ground measuring spindle with locking lever. With ratchet.

Item no.	Measuring range	Thimble Ø	Price EUR
10252810	0-25 mm	Ø30 mm	80 <sup>00</sup>
10252815	25-50 mm	Ø30 mm	89 <sup>00</sup>
10282820	50-75 mm	Ø30 mm	98 <sup>00</sup>
10252825	75-100 mm	Ø30 mm	105 <sup>00</sup>



FROM  
**33<sup>00</sup> EUR**

**NEW IN!**

### MICROMETER HEAD

Micrometer head with hardened spindle, plane-parallel or convex measuring surface. For installation in machines, inspection fixtures, measuring instruments etc. as an adjustable comparator stand stop.

Item no.	Measuring range	Surface	Price EUR
10263200	0-6.5 mm	Plane-parallel	33 <sup>00</sup>
10263210	0-6.5 mm	Convex	33 <sup>00</sup>
10263220*	0-6.5 mm	Plane-parallel	33 <sup>00</sup>
10263300	0-13 mm	Plane-parallel	35 <sup>00</sup>
10263310	0-15 mm	Plane-parallel	35 <sup>00</sup>
10263320	0-15 mm	Convex	35 <sup>00</sup>

\*Inverted scale



**59<sup>00</sup> EUR**  
10324200

### DIGITAL DEPTH GAUGE

Digital depth gauge with switch from mm to inch and zero setting. Measuring from 0-200 mm. Equipped with mini-USB. The bridge length is 100 mm. Meets DIN 862 requirements. Resolution: 0.01 mm. *Delivered in plastic box incl. 1xLR44 battery.*



**9<sup>00</sup> EUR**  
10148115

### BRASS CALIPER

Pocket brass caliper. Measuring from 0-100 mm with 0.01 mm in nonius and jaw length of 25 mm. *Delivered in a plastic case for storage.*



FROM  
**121<sup>00</sup> EUR**

**NEW IN!**

### DIGITAL STEEL MARKING GAUGE

Made of stainless steel. Range 0-200 mm/0-300 mm, 15 x 6 mm rectangular base plate. *Delivered in case.*

Item no.	Measuring range	Reading	Price EUR
10306810	0-200 mm	0.01 mm	121 <sup>00</sup>
10306820	0-300 mm	0.01 mm	141 <sup>00</sup>



**114<sup>00</sup> EUR**  
10238215

### DIGITAL CALIPER WITH MEASURING FACES

Digital caliper with 20 x 30 mm measuring faces. Ideal for measuring of wires/cables. Measuring from 0-150 mm with 0.01 mm resolution and jaw length on 40 mm. Manual on/off, zero setting, switch between mm/inches. *Delivered in plastic case for storage incl. 1xLR44 battery.*





### TABLE SCALE 6 KG/30 KG

User friendly table scale with capacity of 6 or 30 kg, which can be used for many different weighing purposes. The scale is made of a robust ABS plastic housing with weighing plate of 286 x 215 mm. *Delivered incl. rechargeable battery and EU power adapter.*

**NOTE: If plugged into power outlet, the rechargeable battery must be disconnected!**

Item no.	Capacity	Min. weight	Division
18560215	6 kg	20 g	1 g
18560235	30 kg	100 g	5 g



### BLOCK TEST WEIGHTS 5 KG-25 KG

For calibration of class III weights. Block form with handle. Class M1 - ideal for industrial and commercial purposes. *Also available in OIML class F1 and F2 on request.*

Item no.	Capacity	Tolerance	Material	Price EUR
18625105	5 kg	250 mg	Cast iron	43 <sup>00</sup>
18625110	10 kg	500 mg	Cast iron	63 <sup>00</sup>
18625120	20 kg	1000 mg	Cast iron	102 <sup>00</sup>
18625125	25 kg	1250 mg	Cast iron	113 <sup>00</sup>
18625205	5 kg	250 mg	Stainless steel	362 <sup>00</sup>
18625210	10 kg	500 mg	Stainless steel	592 <sup>00</sup>
18625220	20 kg	1000 mg	Stainless steel	925 <sup>00</sup>
18625225	25 kg	1250 mg	Stainless steel	1.232 <sup>00</sup>



**GREAT PRICE!**

### FLOOR SCALE 60 KG/150 KG/300 KG

Industrial floor scale with fast stabilization time and high precision. Ideal for weighing purposes on stocks/productions and facilities where heavy elements are to be weighed and controlled.

Features: Weighing, Tare, Hold and Print (RS232). *Delivered incl. AC 220V power adapter and rechargeable battery.*

**NOTE: If plugged into power outlet, the rechargeable battery must be disconnected!**

Item no.	Capacity	Min. weight	Division	Price EUR
18562415	60 kg	200 g	10 g	370 <sup>00</sup>
18562425	150 kg	400 g	20 g	370 <sup>00</sup>
18562435	300 kg	1000 g	50 g	400 <sup>00</sup>



### ALU. VICE JAWS SET GROOVED

Neutral vice jaws set in hardened aluminum which protects workpieces from marks and damage. Grooved version with V-groove. Does a gentle clamping of sensitive and soft workpieces. Horizontal V-profile for precise clamping of round workpieces. Neodymium magnets ensure a stable setup on the original jaws of the vise. *Delivered in pair.*

Item no.	Length	Material	Price EUR
40110100	100 mm	Grooved alu	19 <sup>00</sup>
40110120	120 mm	Grooved alu	20 <sup>00</sup>
40110125	125 mm	Grooved alu	19 <sup>00</sup>
40110135	135 mm	Grooved alu	23 <sup>00</sup>
40110140	140 mm	Grooved alu	22 <sup>00</sup>
40110150	150 mm	Grooved alu	22 <sup>00</sup>
40110160	160 mm	Grooved alu	24 <sup>00</sup>





**91 EUR**

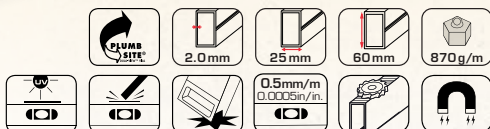
10454385

### IP65 DIGITAL LEVEL PROTRACTOR 4X90°

Measures in mm/m, percentage or in/ft. Measures angles in 0.05 steps, HOLD function, refence reset and remembers 0-point. Measuring range: 4 × 90°, 1000mm/m, 100%, 12 in/ft. With magnetic base. *Delivered in plastic case incl. 2 × E/9V batteries.*



**FROM 97 EUR**



### DIGIMAN™ DIGITAL LEVEL 60/120 CM

- 2 impact-resistant vials
- Plumb Site® Dual-View™
- Backlighted LCD display
- 180° reading
- Neodymium magnets
- HOLD&MODE function
- Shockproof end caps
- Ergo Grip™ handle
- Water- and dust proof
- VPA certified

Item no.	Model	Length	Price EUR
10463520	Standard	60 cm	97 <sup>00</sup>
10463540	Standard	120 cm	116 <sup>00</sup>



### TRIPOD FOR CROSS BEAM LASERS

Professional tripod with scale and vial – up to 2.32 meters. With a sturdy and strong frame. All-terrain adjustable tripod.

**182 EUR**

10468555



**FROM 18 EUR**

### PROTRACTOR

With chrome plated double scale, range 0-180°, laser print on beam.

Item no.	Size	Price EUR
10442080	80 × 120 mm	18 <sup>00</sup>
10442120	120 × 150 mm	22 <sup>00</sup>
10442150	150 × 200 mm	26 <sup>00</sup>
10442200	200 × 300 mm	35 <sup>00</sup>
10442300	300 × 500 mm	61 <sup>00</sup>

### 870G VHX IP65 PROLASER 870G VHX CROSS BEAM LASER

Equipped with horizontal, vertical and intersecting laser beams at 90°. IP65 protection class. Threaded bushing for mounting on tripod.

*Delivered incl. laser target, universal wall mounting fitting, batteries and bag.*

Inside range: 30 m  
Outside range: Up to 60 m with laser detector  
Accuracy: 0.2 mm/m



**199 EUR**

10468220



### 883GB 3D-ALL PROLASER 883GB 3D ALL-LINES CROSS BEAM LASER

With 360° green beams in every direction. 1/4" and 5/8" thread for tripod.

The set includes:

- Multi-functional magnetic mount
- Beamfinder™ green glasses
- Laser target
- Lithium-ion battery
- Battery charger
- Softbag

Inside range: 30 m  
Outside range: Up to 70 m with laser detector  
Accuracy: 0.2 mm/m



**331 EUR**

10468240



**NEW IN!**

**COUNTERSINK SET CS7000**

Set with 3 pcs. Internal countersinks (12 mm, 20 mm and 30 mm) og 1 pcs. external countersink (8-28 mm).

Incl. 2 pcs. NOGA unique 1/4" adaptors allow you to use all standard power tools.



**100 EUR**  
61143105



**FROM 116 EUR**

**STEEL PARALLEL GAUGES IN SET**

Grounded, hardness 55-60 HRC. For parallel mounting of components in machine vices or jigs. ISO 2768 M. Height tolerance: ±0.01 mm. Width tolerance: ±0.02 mm.

Item no.	Size	Quantity	Price EUR
50352005	5 x 150mm	14 pairs	186 <sup>00</sup>
50352010	10 x 150mm	14 pairs	198 <sup>00</sup>
50352630*	2.5 x 150mm	5 pairs	116 <sup>00</sup>

\*Magnetic

**REVOLVING TAIL-STOCK CENTRE**

High-speed and waterproof and hardened to rigidity HRC 60 ±1, dualball bearing and needle roller bearing assembly.

Type A: Regular  
Type B: Long tip



**FROM 176 EUR**

Item no.	Type	MK	Max rpm.	Price EUR
50310410	A (reg.)	MK4	4500 rpm	182 <sup>00</sup>
50310515	A (reg.)	MK5	3500 rpm	398 <sup>00</sup>
50311305	B (long tip)	MK3	5000 rpm	176 <sup>00</sup>
50311410	B (long tip)	MK4	4500 rpm	206 <sup>00</sup>
50311515	B (long tip)	MK5	3500 rpm	410 <sup>00</sup>

**BOWERS GROUP**

Bluetooth



**FROM 548 EUR**

**NEW IN!**

**DIGIMIC IP67 DIGITAL MICROMETER**

DigiMic is a robust micrometer, suitable for use in the harshest environments. Large digital display. DigiMic can be connected with a range of IOT-ready products. Options include Sylvac's Sylcom software products or through an app, which makes it possible to collect data with smartphones and/or tablets. Auto standby after 10 min.

Item no.	Measuring range	Accuracy	Price EUR
12122910	0-25 mm	2 µm	548 <sup>00</sup>
12122920	25-50 mm	2 µm	668 <sup>00</sup>
12122930	50-75 mm	2 µm	848 <sup>00</sup>
12122940	75-100 mm	2 µm	937 <sup>00</sup>

**FROM 331 EUR**



**TAPPING CHUCK REVERSIBLE**

Reversible tapping chuck with overload-pin, adjustable torque and double speed at reversing. Incl. taper shank and 2 pcs. collet chucks.

Use: Thread cutting is done by manual tightening on the drill. When the tightening is removed, the direction of rotation of the threaded pin reverses and 2 x turns are returned.

Item no.	Thread	MK	Max rpm.	Price EUR
50445107	M2-M7	MK1+3	1500 rpm	331 <sup>00</sup>
50445212	M5-M12	MK3+4	1000 rpm	337 <sup>00</sup>
50445320	M8-M20	MK3+4	5000 rpm	384 <sup>00</sup>



Robust, shatterproof and flexible storage boxes.  
Made of 100% recyclable polypropylene in industrial quality,  
which ensures high load-bearing and load capacity.



### RACK BOXES

- 1.0: 100 × 100 × 60 mm
- 2.0: 175 × 100 × 75 mm
- 3.0: 235 × 145 × 125 mm

1. PCS FROM  
**1 EUR**



Item no.	Name	Temperature	Packing	Price EUR
52125100	1.0	+60°C to -10°C	48 pcs.	1 <sup>00</sup>
52125110	2.0	+60°C to -10°C	40 pcs.	2 <sup>00</sup>
52125120	3.0	+60°C to -10°C	48 pcs.	4 <sup>00</sup>

NOTE: Sold in whole packages only



**7 EUR**

52125980

NEW IN!

### WALL MOUNT FOR RACK BOXES

Size 600 × 50 × 3 mm. Made of 1.5 mm galvanized sheet steel.  
Mounting material is included. Fits rack boxes: 1.0/2.0/3.0.

Item no.	Fits model	Packing
52125980	1.0   2.0   3.0	1 pcs.

# STORAGE BOXES



NEW IN!

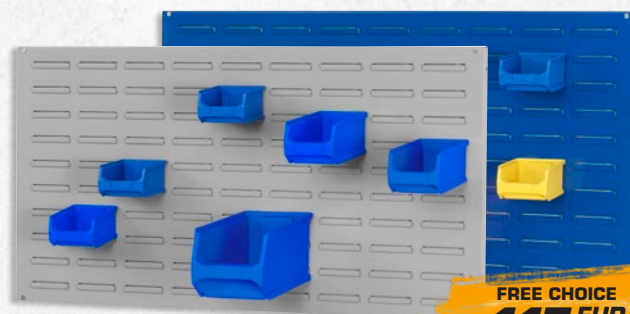
### LID FOR RACK BOXES

Transparent lid for rack boxes.

Item no.	Fits model	Packing	Price EUR
52125800	1.0	10 pcs.	10 <sup>00</sup>
52125805	2.0	10 pcs.	15 <sup>00</sup>
52125810	3.0	10 pcs.	23 <sup>00</sup>

NOTE: Sold in whole packages only

FROM  
**10 EUR**



FREE CHOICE  
**117 EUR**

NEW IN!

### SYSTEM WALL PLATE FOR RACK BOXES

Size 1.000 × 500 × 20 mm. Fits rack boxes: 1.0/2.0/3.0.

Item no.	Colour	Fits model	Packing
52125990	Grey	1.0   2.0   3.0	1 pcs.
52125995	Blue	1.0   2.0   3.0	1 pcs.





### BELT KEY-HOLDER DUTY

This model holds up to 15 pcs. keys. 60 cm stainless steel chain. Attach directly into belt. Material: Metal with leather loop and stainless steel cord.

GREAT PRICE!  
**24 EUR**

20180165



FREE CHOICE  
**311 EUR**

### DIGITAL BRIX REFRACTOMETER

For determining sugar content in food such as fruit, vegetables, juice and beverages etc. Ideal for observing different kind of industry processes, control of cooling lubricants, oils and fats. Resolution: 0.2%.

Delivered in plastic case incl. screw driver, dropper and 2xAAA batteries.



**82 EUR**

15315014

### PH METER WATERPROOF PEN-TYPE PH 0.00-14.00

A great waterproof pH pen that will give you accurate pH measurements - there will be no need to use pH tricky test kits any more. It is very simple to use and the large LED display makes it easy to read. The pH electrode is replaceable/exchangeable.

Uses 4xLR44 batteries.

Item no.	Measuring range	Accuracy
15305090	0 - 50%	±0.2%
15305095	0 - 90%	±0.2%



**30 EUR**

15405335

### HEAD MAGNIFIER WITH LED 5 PCS. EXCH. LENSES

Head magnifier with 5 different binocular lenses (1,0X/1,5X/2,0X/2,5X/3,5X). Powerful, adjustable LED lightning. The LED light unit can be easily removed and used as table lamp. Equipped with headband which is adjustable with clamping screw.

Delivered incl. storage box for lenses.



**47 EUR**

15305120

### REFRACTOMETER AUTO (EG/PG/CW/BF) WITH ATC

To determine the concentration of ethylene (EG) or propylene (PG) in antifreezes. The instrument contains a scale for measuring the density of battery fluid (BF) and the freezing point of cleaning fluid (CF). Equipped with Automatic Temperature Compensation (ATC), that automatically correct temperature discrepancies during use.